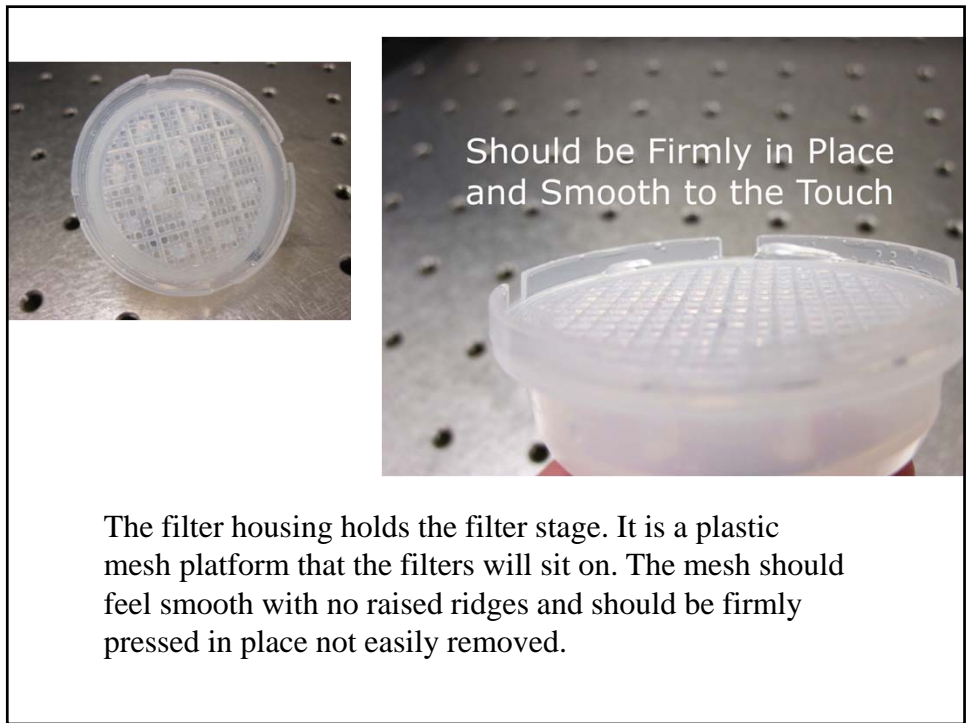
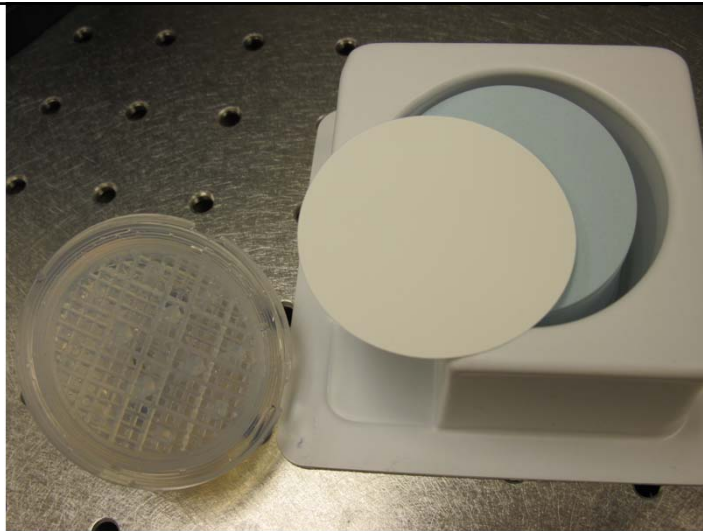




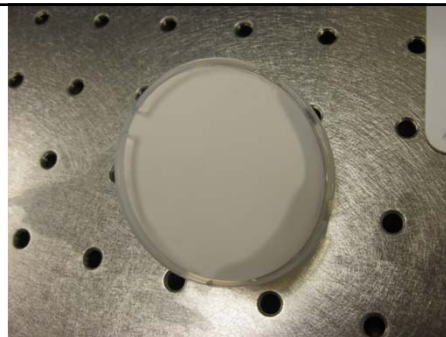
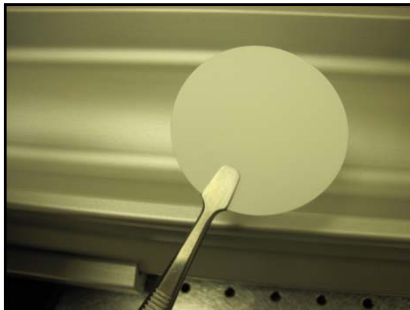
Use the supplied green wrenches to open the filter housing.



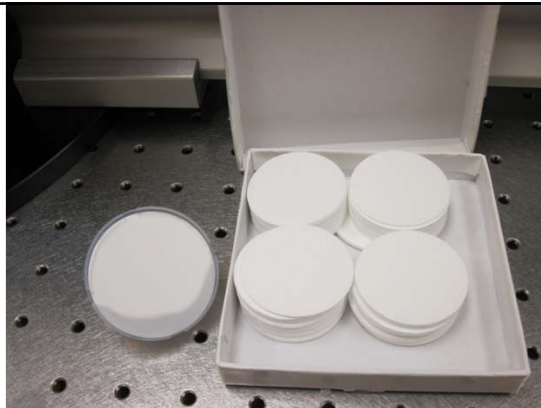
The filter housing holds the filter stage. It is a plastic mesh platform that the filters will sit on. The mesh should feel smooth with no raised ridges and should be firmly pressed in place not easily removed.



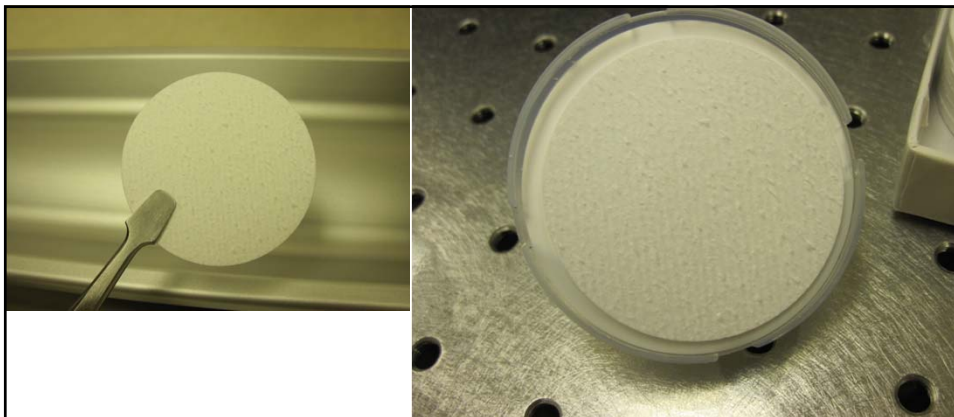
The first filter to use is the 0.2 um nylon membrane filter by Pall. The filter is white and is surrounded by blue paper protectors. The filter is very delicate and should be handled with care (next slide)



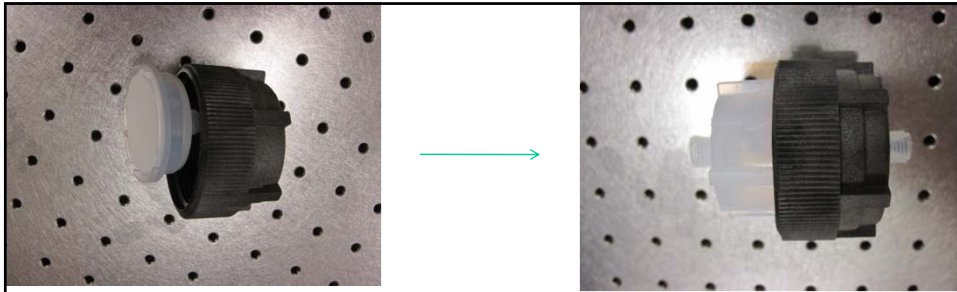
The filter should be picked up and placed on to the filter stage with the supplied flat head tweezers. When the filter is placed on to the filter stage, add a few drops of Decalin on top so that the filter is saturated and will stick to the filter stage.



With the filter in place, next add one of the glass fibre pre-filters by Millipore. These should be handled with care as they are also delicate.



Using the flat head tweezers, pick up one of the glass fibre pre-filters and place it on top of the nylon filter already in place on the filter stage. *Center pre-filter on top of nylon filter.* Once it is in place, drip a few drops of Decalin on top of the pre-filter so that it will stay in place.



Insert the filter stage into the black filter housing cap. Begin to screw in the bottom of the filter housing by hand. Then use the green wrenches to fully tighten it down.

