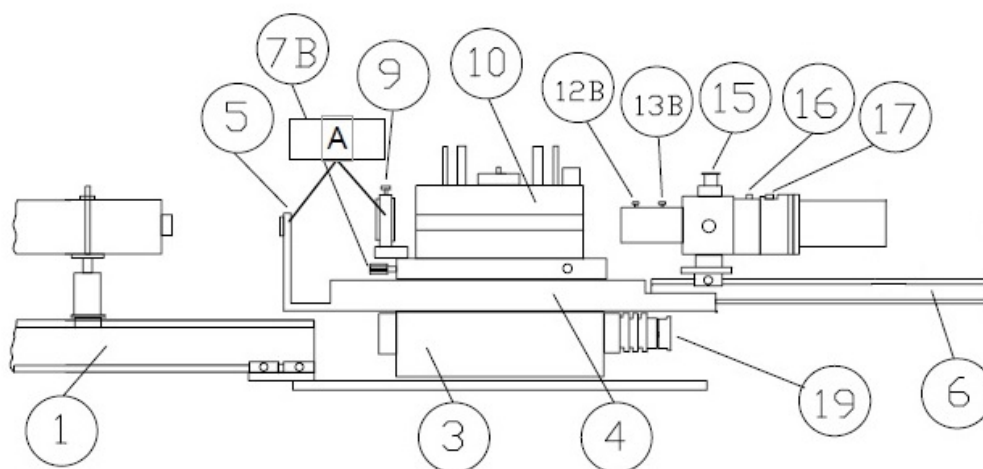
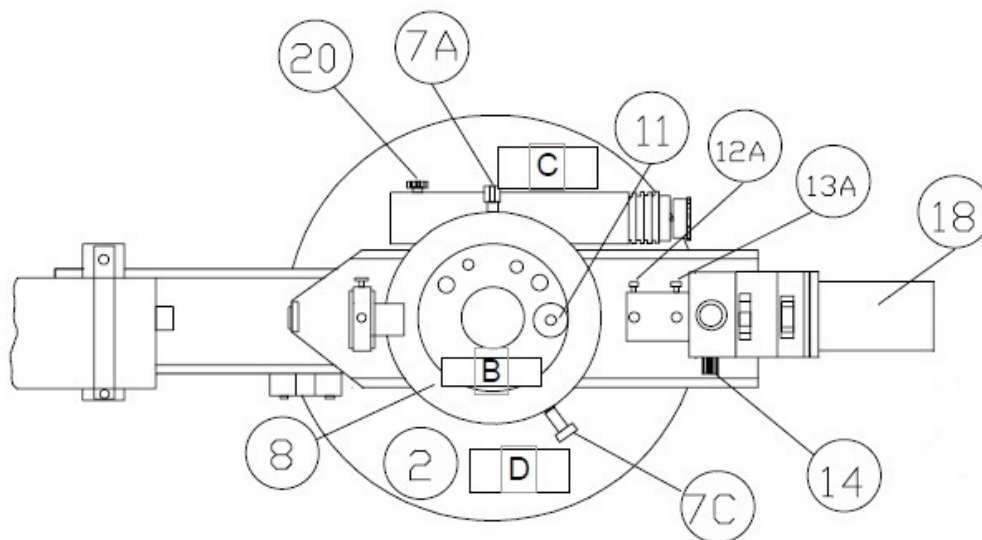


Top & Side View of Assembled Goniometer



- | | | | |
|-------|-------------------------------------|------|---|
| 1. | Laser rail and mounts, optional | 12A. | Lens adjustment, horizontal |
| 2. | Precision-machined base | 12B. | Lens adjustment, vertical |
| 3. | Turntable | 13A. | Slit adjustment, horizontal |
| 4. | Rigid rotating arm | 13B. | Slit adjustment, vertical |
| 5. | Upright for 2mm alignment aperture | 14. | Mirror adjustment |
| 6. | Detector rail | 15. | Eyepiece |
| 7A,B. | Center rotation adjustment screws | 16. | Pinhole wheel |
| 7C. | Center of rotation locking screw | 17. | Filter wheel |
| 8. | Center of rotation adjustment table | 18. | Detector |
| 9. | Beam focusing and steering lens | 19. | Angle adjustment (fine adjustment knob) |
| 10. | Sample cell assembly | 20. | Clutch release |
| 11. | Beam Stop | | |